

## COLD SHUTS GRADE 30

WORKING LOAD LIMIT: 400 TO 3,700 LBS.

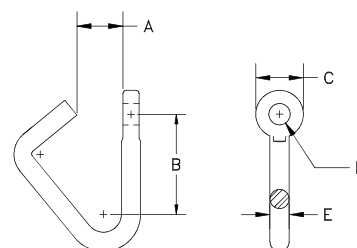
Cold Shuts are used for quick, temporary repairs of low carbon chain and to attach components to chain ends.

### BENEFITS & FEATURES

- Zinc plated finish
- Quick installations
- Not to be used as a permanent repair of chains
- Design factor 4:1
- Do not use for overhead lifting

Size (in.)	Working Load Limit (lbs.)	Standard Package	Product Code	Dimensions (in.)					Weight (lbs.)
				A	B	C	D	E	
3/16	400	100	51091	0.44	0.95	0.45	0.20	0.18	0.03
1/4	800	100	51191	0.60	0.92	0.52	0.26	0.24	0.05
5/16	1,300	100	51291	0.76	1.17	0.66	0.33	0.31	0.11
3/8	1,900	100	51391	0.89	1.26	0.75	0.39	0.37	0.17
1/2	3,700	50	51591	0.90	1.71	1.03	0.52	0.49	0.28

Not to be used for load securement (tie down). 3/16" to 1/2" may be imported.  
Working load limit does not meet NACM specifications for corresponding chain size.



## FORGED TRIANGLES ("D" RINGS)

WORKING LOAD LIMIT: 4,000 LBS.

Forged Triangles ("D" rings) are used as quick, easy attachment points for synthetic products used in towing, logging and general industry.

### BENEFITS & FEATURES

- Forged from superior steel
- Fits up to 3" flat webbing
- Design factor 6:1

Size (in.)	Working Load Limit (lbs.)	Standard Package	Finish	Product Code	Dimensions (in.)				Weight (lbs)
					A	B	C	D	
3	4,000	10	Self Colored	90210	2.43	0.88	3.12	0.56	1.00

