

# ELKAY®

## SPECIFICATIONS

### Heavy Duty 14 Gauge Drinking Fountain Freeze Resistant, Wall Mount, Fully Exposed Models EHW217FPK & EHWM217FPK

#### PRODUCT SPECIFICATION

RATED FOR INDOOR AND OUTDOOR USE

Wall mounted freeze-resistant drinking fountain constructed of #14 gauge, type 304, stainless steel polished to a lustrous satin finish.

Contoured basin minimizes splashing and has vandal-resistant bubbler. Keyed in location to prevent rotation. Easy to operate, fully functional chrome plated push button is vandal-resistant. Bottom cover plate included. Flow regulator provides constant stream from 20 to 105 psi water pressure.

Includes freeze-resistant box LKFRB1 to be mounted on an interior heated wall where the temperature does not drop below 50°F (10°C).

Complies with the requirements of A.D.A. (American's with Disabilities Act) when properly installed.

#### NO LEAD DESIGN

**THIS DRINKING FOUNTAIN COMPLIES WITH THE LEAD-FREE DEFINITION IN THE SAFE DRINKING WATER ACT OF 1986 AND LEAD CONTAMINATION CONTROL ACT OF 1988.**

Elkay Drinking Fountains are manufactured with a waterway system utilizing copper components and completely lead-free material. These waterways have no lead because all leaded materials, such as leaded brass, have been removed.

This fountain is certified by WQA to lead-free compliance including **NSF/ANSI 61 and 372.**

#### CONSTRUCTION

**EHW217FPK** furnished complete with vandal-resistant bubbler and easy to operate, vandal-resistant front push-button. Patented\* valve and in-line flow regulator provides stream from (20-105 psi). Stainless steel wall plate with surface mounting plate and vandal-resistant 14 gauge bottom cover plate included.

**EHW217FPK** does not include the surface mounting plate. To be mounted with **MPW200** in-wall mounting plate. **ML100** in-wall support legs are optional.

**MPW200** In-wall carrier (ordered separately) constructed of heavy-gauge steel. Plate can be installed directly to studs or with optional ML100 support legs. All parts painted with a protective coating to last.

**LKFRB1** includes box with separate front louvered panel. Flow regulator provides constant stream from 20 to 105 psi water pressure. Operated by adjustable cable system. Trap and drain tube included for proper installation.



#### INSTALLER NOTE

THIS DRINKING FOUNTAIN IS FURNISHED WITH A BUBBLER AND VALVE INCLUDING ALL CONNECTING FITTINGS WHICH ARE MANUFACTURED OF COMPLETELY LEAD FREE MATERIAL. IT IS RECOMMENDED THAT SHUT OFF VALVE AND SUPPLY TUBING SUPPLIED BY OTHERS BE NON-METALLIC.

Job Name: _____
Model: _____ Qty. _____
Contact: _____
Approval Signature: _____
Notes:

*This specification describes an Elkay product with design, quality and functional benefits to the user. When making a comparison of other producer's offerings, be certain these features are not overlooked.*

**Heavy Duty 14 Gauge Drinking Fountain**  
**Freeze Resistant, Wall Mount, Fully Exposed**  
**Models EHW217FPK & EHWM217FPK**

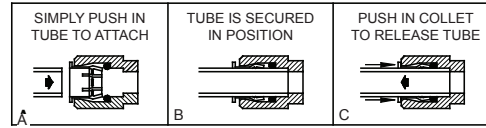
**ELKAY®**  
**ROUGH-IN DIMENSIONS**

RATED FOR INDOOR AND OUTDOOR USE

**INSTALLER NOTE**

THIS DRINKING FOUNTAIN IS FURNISHED WITH A BUBBLER AND WATERWAY WITH ALL CONNECTING FITTINGS WHICH ARE MANUFACTURED OF COMPLETELY LEAD FREE MATERIAL. SHUT OFF VALVE (NOT FURNISHED) TO ACCEPT 3/8" O.D. UNPLATED COPPER TUBE.

**OPERATION OF QUICK CONNECT FITTINGS**

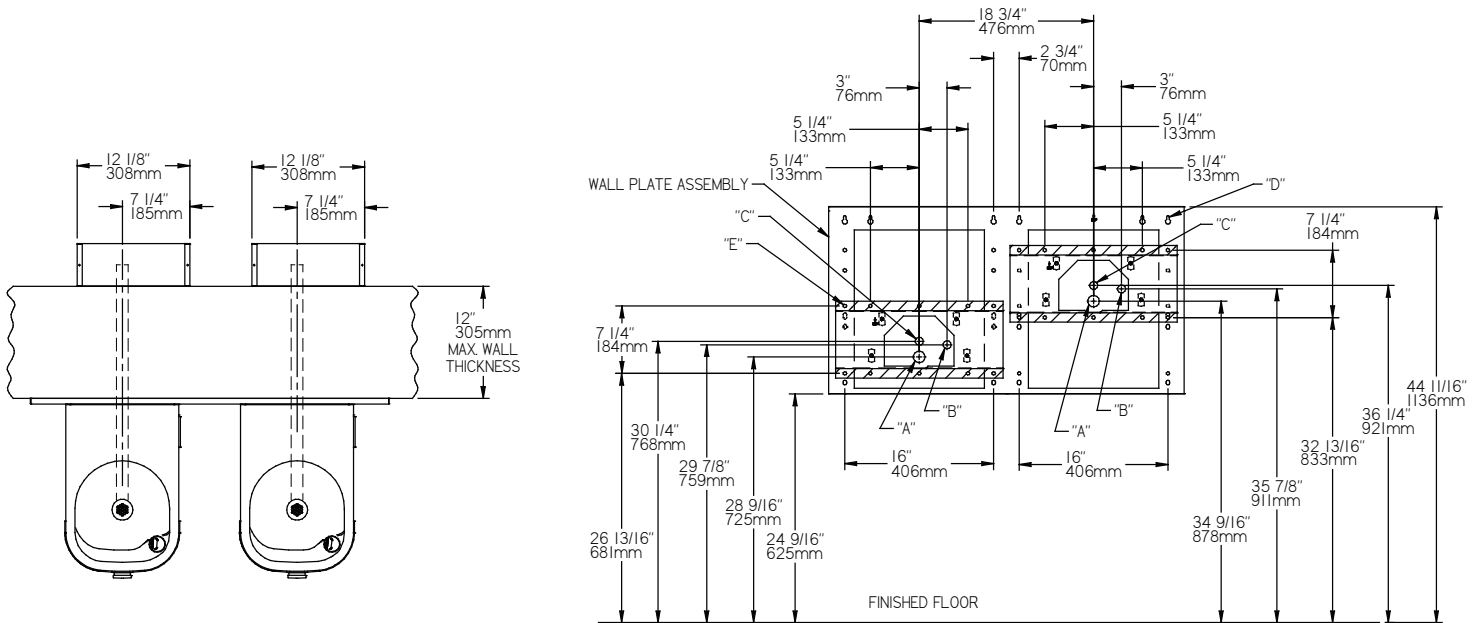


PUSHING TUBE IN BEFORE PULLING IT OUT HELPS TO RELEASE TUBE

**When installing EHWM217FPK which includes a surface mounting plate, refer to the diagrams below.**

**For electrical, waste, and water supply locations refer to the Installation/Owners manual.**

**EHWM217FPK WITH SURFACE MOUNTING PLATE**  
**MOUNTING BOLT AND ACCESS HOLE LAYOUT**



**LEGEND:**

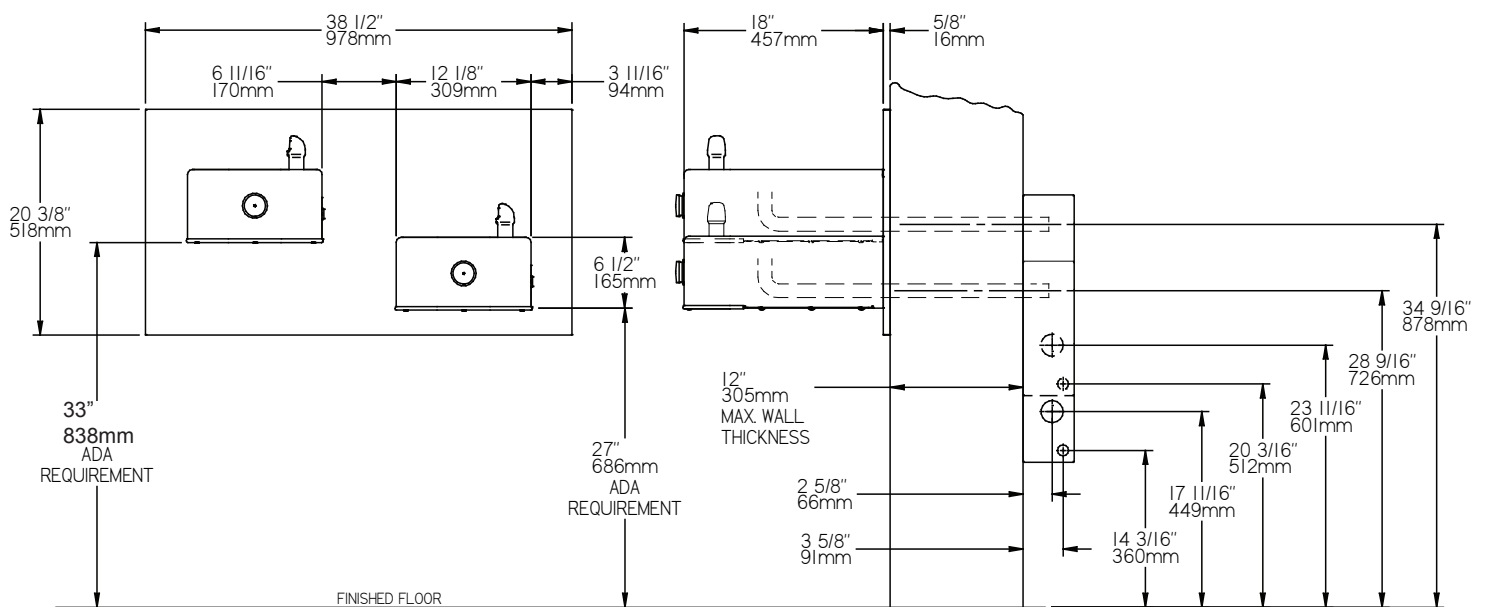
- A = 1-3/4" DIA. (44 mm) HOLE FOR WASTE LINE
- B = 7/8" DIA. (22 mm) HOLE FOR WATER SUPPLY
- C = 7/8" DIA. (22 mm) HOLE FOR OPERATING CABLE
- D = 1/4" DIA. (6 mm) HOLE FOR MOUNTING PLATE TO WALL
- E = 3/8" DIA. (10 mm) HOLE FOR MOUNTING PLATE TO WALL

**Heavy Duty 14 Gauge Drinking Fountain**  
**Freeze Resistant, Wall Mount, Fully Exposed**  
**Models EHW217FPK & EHWM217FPK**

**ELKAY®**  
**ROUGH-IN DIMENSIONS**

RATED FOR INDOOR AND OUTDOOR USE

**EHWM217FPK WITH SURFACE MOUNTING PLATE**  
**ROUGH-IN DRAWING**



**1. Wall should already be framed for the fountain using dimensions shown in Fig. 1.** Shown dimensions pertain to installation location.

These dimensions are required for compliance with ANSI Standard A117.1 and ADA (Framing shown for reference only).

- 2. Remove bottom cover from fountain and save the screws.**
- 3. Install the fountain** using bolts and washers (provided). Tighten securely.
- 4. Attach drain tube** to fountain and cut to required length using the freeze resistant box as a guide.
- 5. Install freeze-resistant box** - see box instructions.
- 6. Replace bottom cover.**



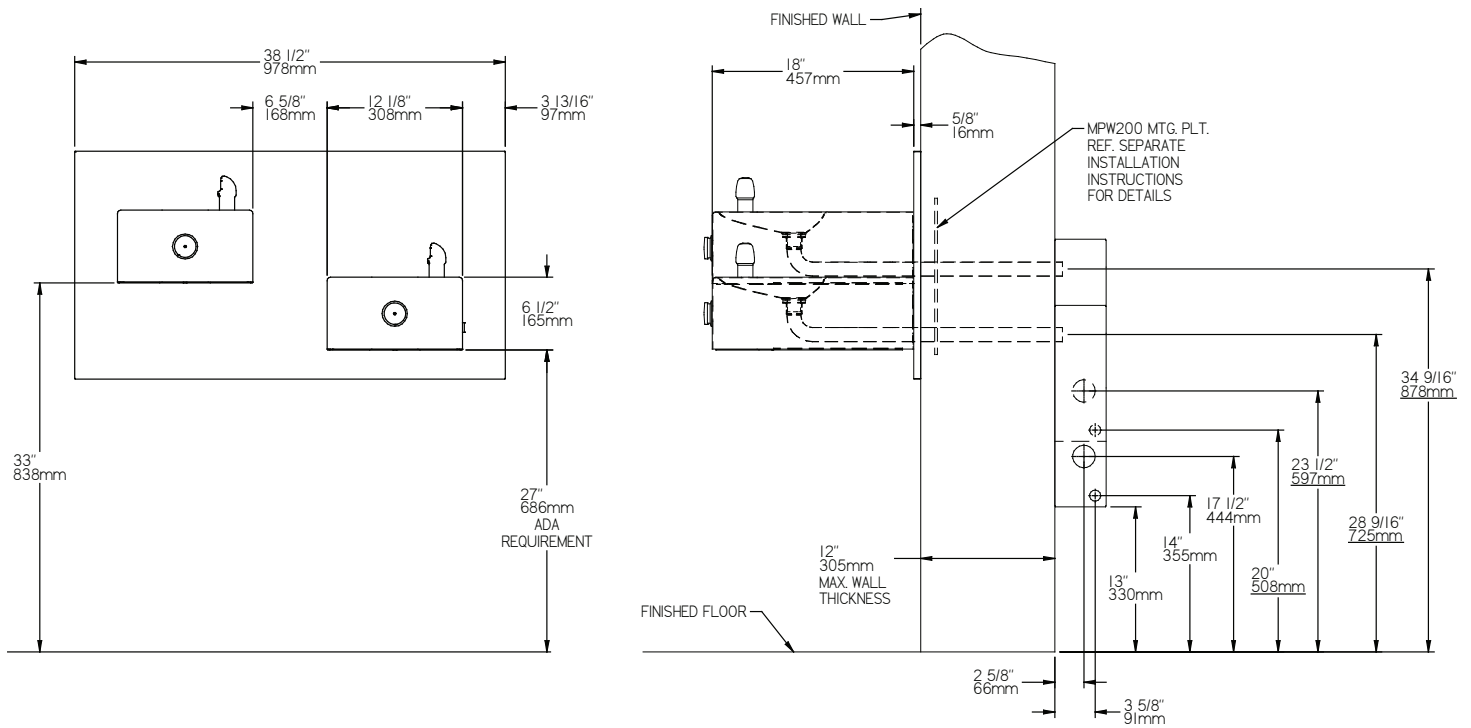
**Heavy Duty 14 Gauge Drinking Fountain**  
**Freeze Resistant, Wall Mount, Fully Exposed**  
**For use with In-Wall Carrier MPW200**  
**Models EHW217FPK & EHWM217FPK**

**ELKAY®**

**ROUGH-IN DIMENSIONS**

RATED FOR INDOOR AND OUTDOOR USE

**EHW217FPK WITH MPW200 MOUNTING PLATE**  
**ROUGH-IN DRAWING**



- 1. Wall should already be framed for the fountain using dimensions shown in Fig. 1.** Shown dimensions pertain to installation location. These dimensions are required for compliance with ANSI Standard A117.1 and ADA (Framing shown for reference only).
- 2. Remove bottom cover from fountain and save the screws.**
- 3. Install the fountain** using bolts and washers (provided). Tighten securely.
- 4. Attach drain tube** to fountain and cut to required length using the freeze resistant box as a guide.
- 5. Install freeze-resistant box** - see box instructions.
- 6. Replace bottom cover.**