

Features

- Oval basin.
- Unique overflow drain.
- No faucet holes; requires wall- or counter-mount faucet.
- Fits standard 14- x 17-inch countertop cutout.

Material

- 20-gauge stainless steel.

Installation

- Drop-in or under-mount.

Required Accessories

K-7114-A Pop-Up Drain

or

K-7126 Standard pop-up drain, non-exposed, with lift rod

or

K-7124-A Pop-Up Clicker Drain

or

K-7127-A Drain

or

K-7128-A Drain

or

K-7129-A Drain

or

K-7131-A Offset Drain

Recommended Accessories

K-8998 P-Trap

Components

Additional included component/s: 1193643 Basin Clamps , and
Cutout template..



ADA

CSA B651

OBC

Codes/Standards

ASME A112.19.3/CSA B45.4

ADA

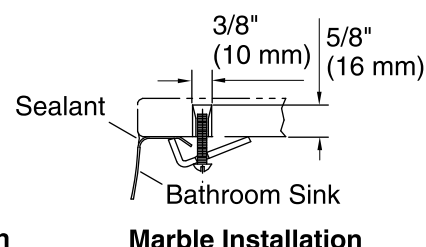
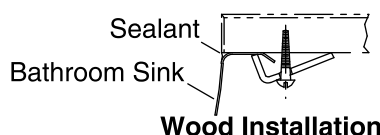
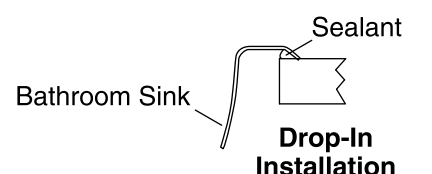
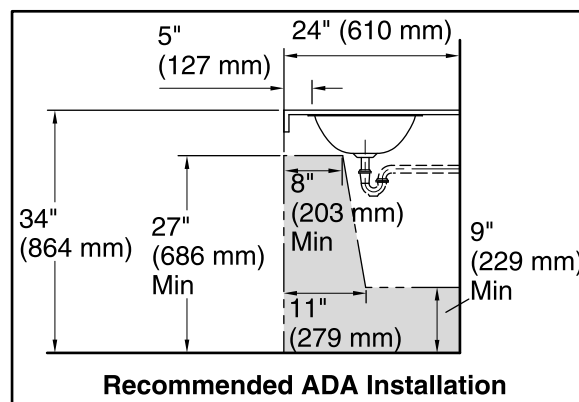
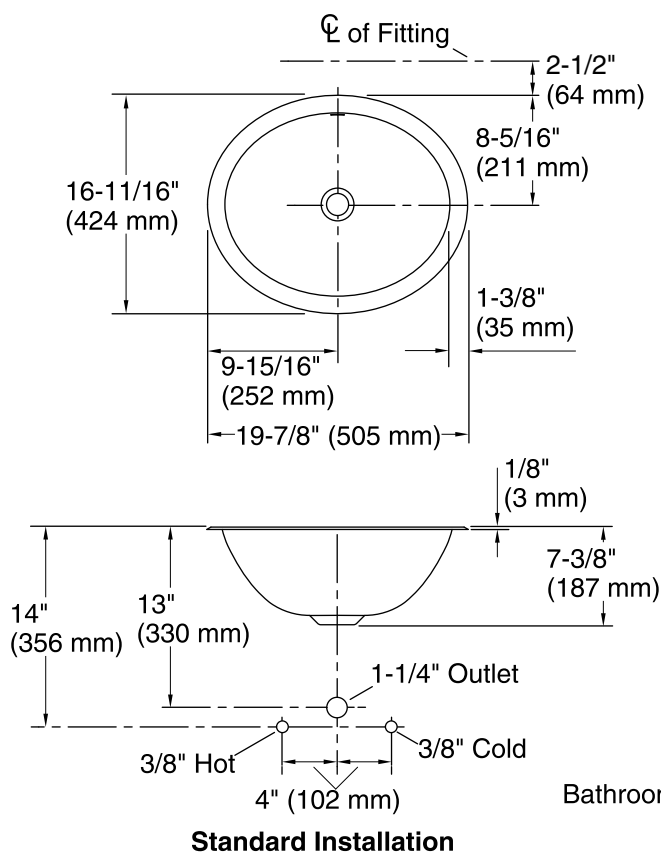
ICC/ANSI A117.1

CSA B651

OBC

KOHLER® One-Year Limited Warranty

See website for detailed warranty information.



Technical Information

All product dimensions are nominal.

Installation:	Drop-in, Under-mount
Bowl area:	Length: 17-3/8" (441 mm)
	Width: 14" (356 mm)
	With overflow: Yes
	Water depth: 4-1/16" (103 mm)
Bowl area:	With overflow: Yes
Drain hole:	1-5/8" (41 mm)
Template:	1248333-7, required, included

Notes

Install this product according to the installation instructions.

Installer must supply anchors based on countertop material and thickness.

ADA, OBC, CSA B651 compliant when installed to the specific requirements of these regulations.